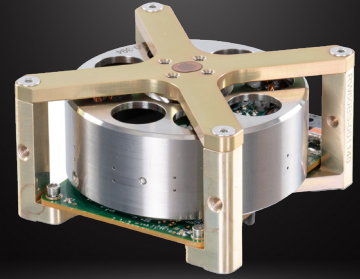


# REACTION WHEEL

## Part Number Guide



### Reaction Wheel Generation

**RW:** Low Voltage Design  
**RW3:** High Torque  
**RW4:** Radiation Tolerant

### Supply Voltage

**4:** 4 V nominal  
**7:** 7 V nominal  
**28:** 28 V nominal

### Bearings

**0:** Steel ABEC 3  
**1:** Steel ABEC 5  
**2:** Hybrid DLC/WCC ABEC 7  
**3:** Advanced Hybrid ABEC 7

### Radiation Tolerance

**0:** Standard parts  
**1:** Lot screened parts  
**2:** Rad-tolerant parts

RW3-0.06-28-RS485-2-1-1

### Angular Momentum

**0.003:** 3 mNm-sec  
**0.01:** 10 mNm-sec  
**0.03:** 30 mNm-sec  
**0.06:** 60 mNm-sec  
**0.20:** 200 mNm-sec  
**0.40:** 400 mNm-sec  
**1.0:** 1 Nm-sec

### Communications

RS485 (RS422)  
CAN  
ASYNC  
I2C

### Motor Redundancy

**0:** None  
**1:** Dual or Litz-wound  
**2:** Full Redundant

Not all combinations mutually possible.  
Please consult factory for full selection.